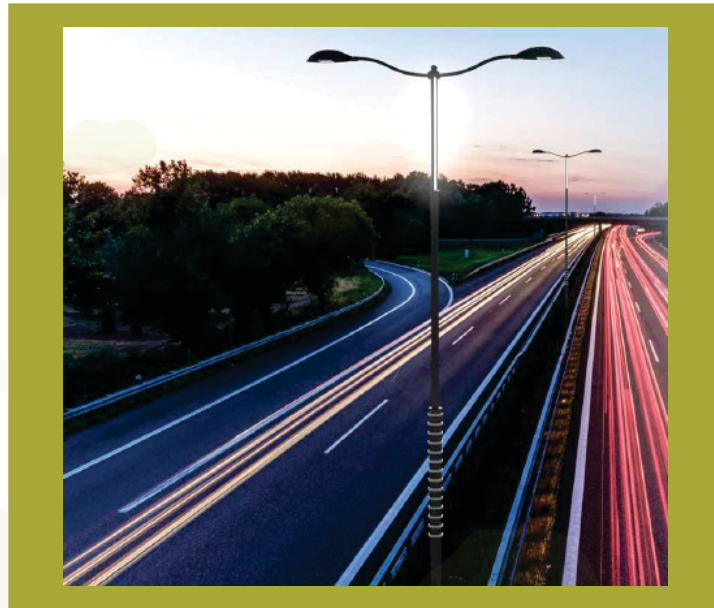
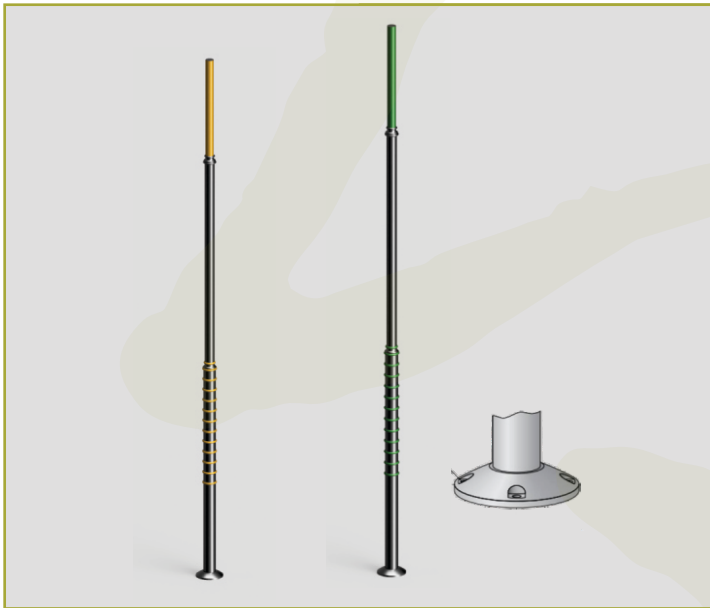


DRUM

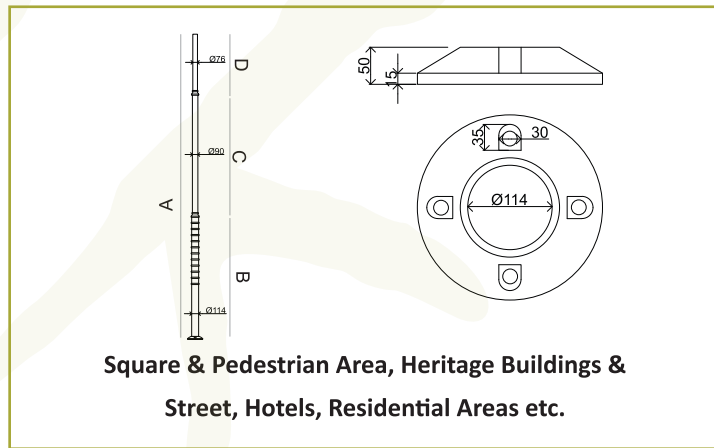
Drum is defined with its rings. It plays with its shape and color which is elusory and unique. Its vivid designing interacts with the urban architecture

- Curved bracket and colored decorative elements contribute to enhance the aesthetic value of the pole, making it non conventional and distinguishable.
- Decorative street light pole made out of GI/ MS tubular pole
- Multiple coating of weather resistant Polyurethane paint in various colors
- T' washed, etched primered for better adhesion
- Zinc rich Epoxy primered and painted in UV stablised Polyurethane painting formula.
- The embellishments are cast in iron/ aluminum and fitted to the column by grub screw fitting.
- Hot dip galvanizing can be done on the complete pole on request



OUTDOOR LIGHTING

POLE



Product Name	Catlogue No	Pole height(A)	Dia/length(B)	Dia/length©	Dia/length(D)
DRUM	VAK-PL-DRU-3	3mtr	114mm/1mtr	60mm/2mtr	-
	VAK-PL-DRU-4	4mtr	114mm/1mtr	60mm/3mtr	-
	VAK-PL-DRU-5	5mtr	114mm/2mtr	60mm/3mtr	-
	VAK-PL-DRU-6	6mtr	140mm/2mtr	90mm/4mtr	-
	VAK-PL-DRU-7	7mtr	140mm/2mtr	90mm/5mtr	-
	VAK-PL-DRU-8	8mtr	140mm/2mtr	114mm/3mtr	90mm/3mtr
	VAK-PL-DRU-9	9mtr	140mm/3mtr	114mm/3mtr	90mm/3mtr