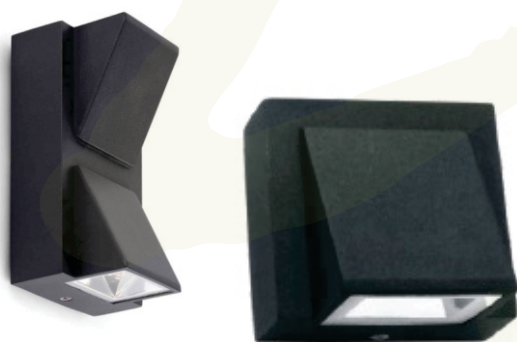


CRUX

Cool, ultra-modern with minimalist crisp, the new crux is a highly versatile collection of wall mounted step and Updownlights

- Compact, tough and stylish wall mounted luminaire with fine finish
- Suitable for outdoor and indoor pathways and stairs
- For architects and consultants, who are dissatisfied with limited lighting effects.
- Aesthetic and simple design
- Extremely low power consumption and long operating life

OUTDOOR LIGHTING



WALL LIGHT

Housing: Crux Body is made up of Diecastaluminium, silicon rubber gasket, stainless steel cover fastener.

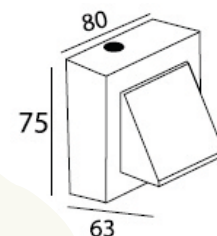
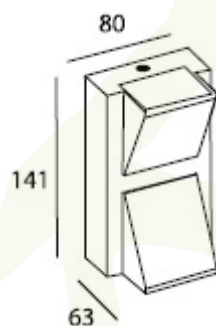
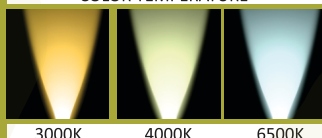
Optical: Diffuser made of tempered glass. Light distribution is Symmetrical.

Electrical: Fitting is wired with energy efficient power led having long service life, MCPCB and wide range constant current driver.

Finishing: Complete fitting is pure polyester based powder coated with high corrosion resistance and chemical chromatised protection.



COLOR TEMPERATURE



Staircases, Ramp, Entrance / Exits ,Stairwells, Paths, Interior & Exterior steps, Patios, Hallways / Passages, Porches

Product Name	Catlogue Reference No	Size (mm)	LED Wattage	Ingress Protection
CRUX	VAK-WW-CRU-UD-S-4+4	141X80X63	8W	IP65
	VAK-WW-CRU-D-S-4	75X80X63	4W	IP65