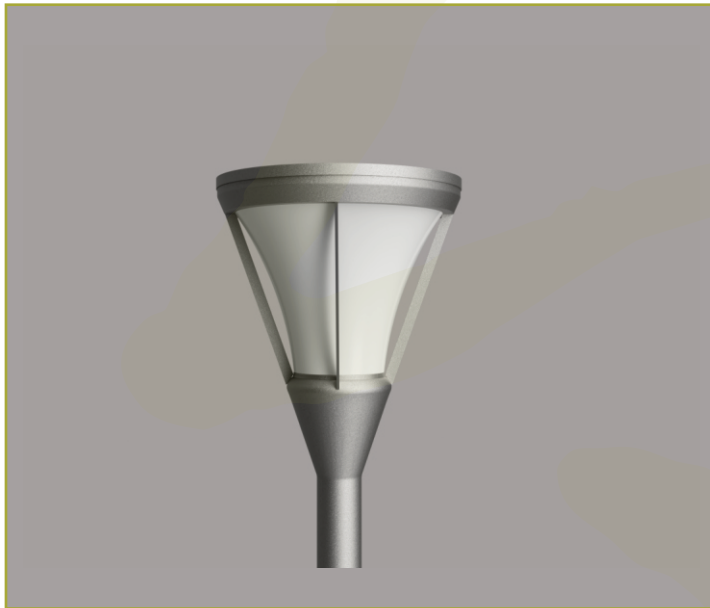


CHARTER

An elegant post top mounted amenity lantern, with associated columns

- Luminaire and reflector design give 100% indirect lighting and prevent the spread of light above the horizontal
- Excellent performance: 95% of the light emitted from the light source is captured by the top reflector
- Decorative lamp shield provides visual appeal
- Aesthetic design to create ambiance.
- Innovative high performance optical system



OUTDOOR LIGHTING



URBAN AMENITY

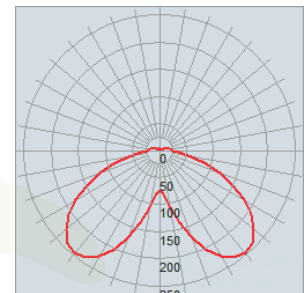
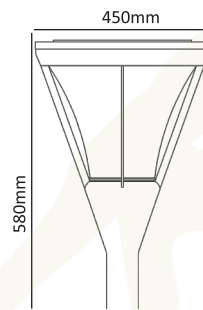
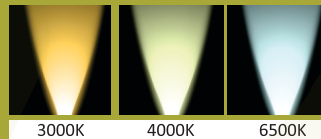
Housing: Charter Body is made up with corrosion resistant die cast Aluminum, Stainless steel screws. Housing is treated with a chemical chromated protection before powder coating, ensuring high corrosion resistance. Rubber gaskets are provided at appropriate location for dust and water protection

Optical: Lighting system with excellent downward symmetrical light distribution and visual appeal. The exactitude optical system gives very low glare rating, while reducing light pollution

Electrical: Fitting is wired for 40W energy efficient LED engine.

Finishing: Complete fitting is pure polyester based powder coated with high corrosion resistant and chemically chromated protection. Also available with multiple coats of weather resistant polyurethane paint in various color.

COLOR TEMPERATURE



Square & Pedestrian Area, Urban Road & Street, Commercial Complex, Residential Areas etc.

Product Name	Catalogue Reference No	Lumens	LED Wattage	Ingress Protection
CHARTER	VAK-PT-CHA-POST-40	2700	40W	IP66